

Active RhoA Monoclonal antibody
 Catalog Number: NL23002

Tel : 18674031376 (微信同步)

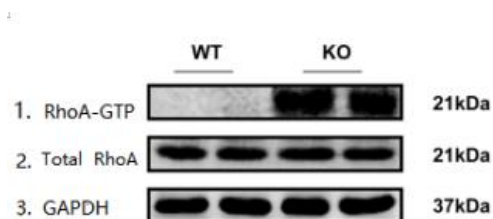
Product Uses Include

Analysis of in vivo RhoA activation levels
 Detection of compounds and proteins that enhance RhoA activity
 Detection of compounds and proteins that inhibit RhoA activity
 The activity of RhoA in cells (tissues) was studied qualitatively

Product Description

Description	Anti-Active RhoA Mouse Monoclonal Antibody
Another Name	Anti-RhoA-GTP Mouse Monoclonal Antibody
Catalog Number	NL23002
Size:	30 µl
Tested Applications:	IP , IHF IHC
Cited Applications:	IP , IHC , IF , FC ICC ICF IHF
Tested Reactivity:	Human , mouse Rat
Cited Reactivity:	Human , mouse Rat
Gene Symbol:	RhoA
Immunogen :	Recombinant full length protein of active RhoA
Concentration:	1mg/ml
Host/Isotype:	mouse/IgG2b
Class:	monoclonal
Type:	Antibody
Predicted mv:	22KDa
Observed mv:	22KDa
Uniprot:	p61586
Constituents:	PBS (without Mg ²⁺ and Ca ²⁺), pH 7.4, 150 mM NaCl, 50% glycerol
Storage Conditions:	Store at -20°C for one year after shipment
Background:	Small GTPases are a super-family of cellular signaling regulators. RhoA belongs to the Rho sub-family of GTPases. Rho proteins play critical roles in many actin cytoskeleton-dependent processes including platelet aggregation, cell motility, contraction, and cytokinesis. It regulates the formation of stress fibers and focal adhesions in fibroblasts and Ca ²⁺ sensitivity of smooth muscle contraction.

Tested Applications: IP/WB

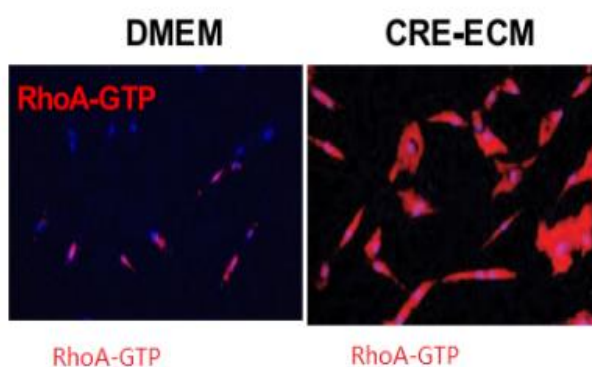


图三：WT 细胞裂解物 (20ul, 1mg/ml), 用 Anti GAPDH rabbit polyclonal antibody (稀释比例, 1:1000, Cat # NL28001)进行蛋白印迹分析.

图一：WT 细胞裂解物/Ko 细胞裂解物 (500ul, 1mg/ml) 与 ProteinA/G 和 Anti-RhoA-GTP Antibody (1ul, 1mg/ml Cat# 23002), 进行孵育, 用 Anti RhoA rabbit polyclonal antibody (稀释比例, 1:1000, Cat # NL-24002) 进行蛋白印迹分析.

图二：WT 细胞裂解物 (20ul, 1mg/ml), 用 Anti RhoA rabbit polyclonal antibody (稀释比例, 1:1000, Cat # 24002) 进行蛋白印迹分析.

Tested Applications: IF



左图：DMEM 细胞 用 RhoA -GTP 免疫荧光染色 (1: 100 稀释) 的图像 (红色)

右图：CRE-ECM 处理过的细胞用 RhoA -GTP 免疫荧光染色 (1: 100 稀释) 的图像 (红色)